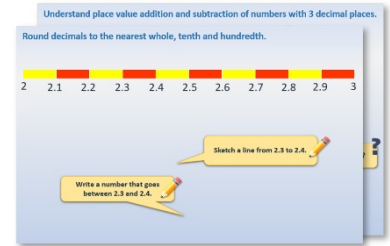


Week 1 Day 1

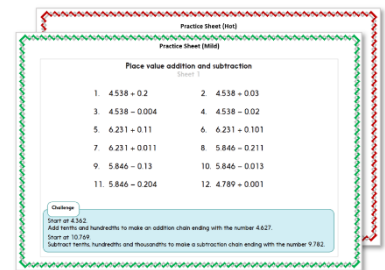
Understanding decimals

Each day covers one maths topic. It should take you about 1 hour or just a little more.

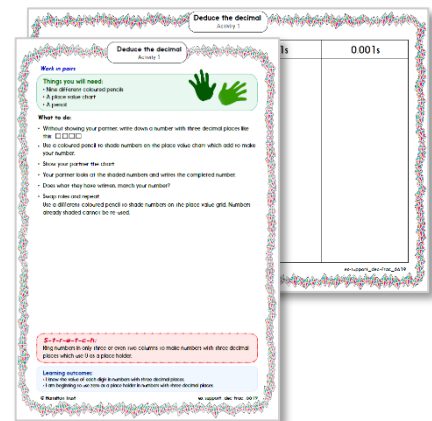
1. Start by reading through the **Learning Reminders**. They come from our *PowerPoint* slides.



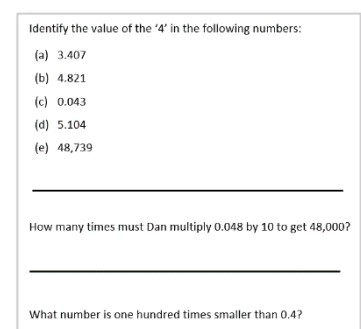
2. Tackle the questions on the **Practice Sheet**. There might be a choice of either **Mild** (easier) or **Hot** (harder)! Check the answers.



3. Finding it tricky? That's OK... have a go with a grown-up at **A Bit Stuck?**



4. Have I mastered the topic? A few questions to **Check your understanding**. Fold the page to hide the answers!



Learning Reminders

Understand place value addition and subtraction of numbers with 3 decimal places.

4.735

What do the 7, 3 and 5 represent?

Place value grid

10s	1s	0.1s	$\frac{1}{10}$ s	0.01s	$\frac{1}{100}$ s	0.001s	$\frac{1}{1000}$ s
	4	•	7		3		5
	4	•	8				

What is $4.735 - 0.03$?

Which is more, 4.735 or 4.8? Why?

Learning Reminders

Understand place value addition and subtraction of numbers with 3 decimal places.

4.735

4.775

4.375

4.495

4.494

4.444

Add 0.04.
Write the new number.

Subtract 0.4

Add 0.12

Subtract 0.001

Subtract 0.05

What was your final number?



Learning Reminders

Understand place value addition and subtraction of numbers with 3 decimal places.

3.626

Add 0.03.
Write the new number.

Subtract 0.5

Add 0.14

Subtract 0.002

Subtract 0.08

What is your final number?

Practice Sheet

Place value addition and subtraction

1. $4.538 + 0.2$

2. $4.538 + 0.03$

3. $4.538 - 0.004$

4. $4.538 - 0.02$

5. $6.231 + 0.11$

6. $6.231 + 0.101$

7. $6.231 + 0.011$

8. $5.846 - 0.211$

9. $5.846 - 0.13$

10. $5.846 - 0.013$

11. $5.846 - 0.204$

12. $4.789 + 0.001$

13. $4.408 + 2.222$

14. $0.725 + 1.001$

15. $1.903 + 1.107$

Challenge

Start at 4.362.

Add tenths and hundredths to make an addition chain ending with the number 4.627.

Start at 10.769.

Subtract tenths, hundredths and thousandths to make a subtraction chain ending with the number 9.782.

Practice Sheet answers

1. $4.538 + 0.2 = 4.738$

3. $4.538 - 0.004 = 4.534$

5. $6.231 + 0.11 = 6.341$

7. $6.231 + 0.011 = 6.242$

9. $5.846 - 0.13 = 5.716$

11. $5.846 - 0.204 = 5.642$

13. $4.408 + 2.222 = 6.63$

15. $1.903 + 1.107 = 3.01$

2. $4.538 + 0.03 = 4.568$

4. $4.538 - 0.02 = 4.518$

6. $6.231 + 0.101 = 6.332$

8. $5.846 - 0.211 = 5.635$

10. $5.846 - 0.013 = 5.833$

12. $4.789 + 0.001 = 4.79$

14. $0.725 + 1.001 = 1.726$

Challenge

Accept answers where children have added both tenths and hundredths to reach the answer, e.g. $4.362 + 0.2 + 0.065 = 4.627$ or $4.362 + 0.18 + 0.085 = 4.627$

Accept answers where children have subtracted tenths, hundredths and thousandths to reach the answer, e.g.

$$10.769 - 0.9 - 0.08 - 0.007 = 9.782$$

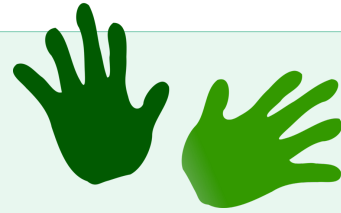
A Bit Stuck?

Deduce the decimal

Work in pairs

Things you will need:

- Nine different coloured pencils
- A place value chart
- A pencil



What to do:

- Without showing your partner, write down a number with three decimal places like this: $\square.\square\square\square$
 - Use a coloured pencil to shade numbers on the place value chart which add to make your number.
 - Show your partner the chart.
 - Your partner looks at the shaded numbers and writes the completed number.
 - Does what they have written, match your number?
 - Swap roles and repeat.
- Use a different coloured pencil to shade numbers on the place value grid. Numbers already shaded cannot be re-used.

S-t-r-e-t-c-h:

Ring numbers in only three or even two columns to make numbers with three decimal places which use 0 as a place holder.

Learning outcomes:

- I know the value of each digit in numbers with three decimal places.
- I am beginning to use zero as a place holder in numbers with three decimal places.

A Bit Stuck?
Deduce the decimal

1s	0.1s	0.01s	0.001s

A Bit Stuck?
Deduce the decimal

Place value chart

1	0.1	0.01	0.001
2	0.2	0.02	0.002
3	0.3	0.03	0.003
4	0.4	0.04	0.004
5	0.5	0.05	0.005
6	0.6	0.06	0.006
7	0.7	0.07	0.007
8	0.8	0.08	0.008
9	0.9	0.09	0.009

Check your understanding Questions

Identify the value of the '4' in the following numbers:

- (a) 3.407
- (b) 4.821
- (c) 0.043
- (d) 5.104
- (e) 48,739

Fold here to hide answers:

Check your understanding Answers

Identify the value of the '4' in the following numbers:

- (a) 3.407 4 tenths
- (b) 4.821 4 or 4 ones
- (c) 0.043 4 hundredths
- (d) 5.104 4 thousandths
- (e) 48,739 40 thousand